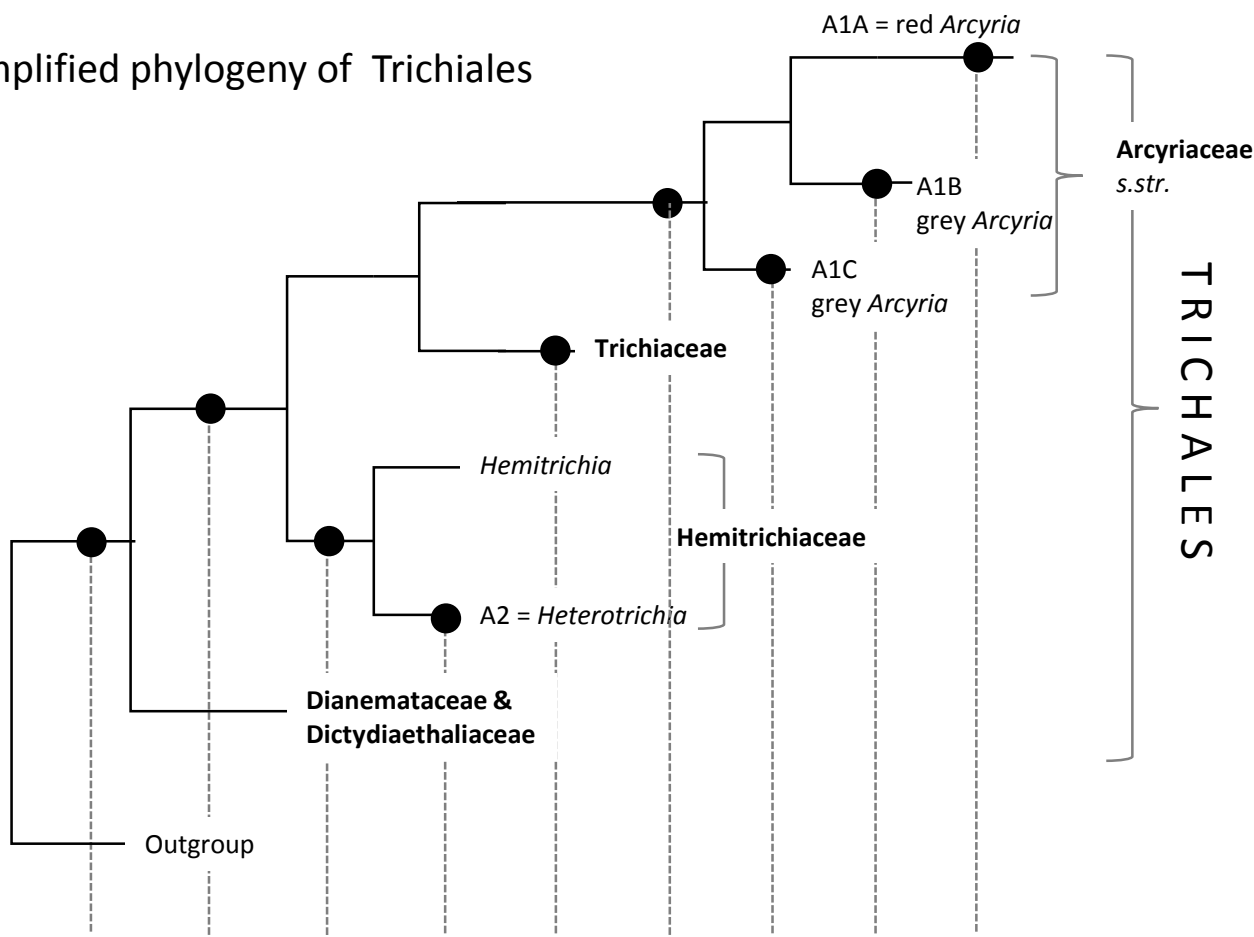
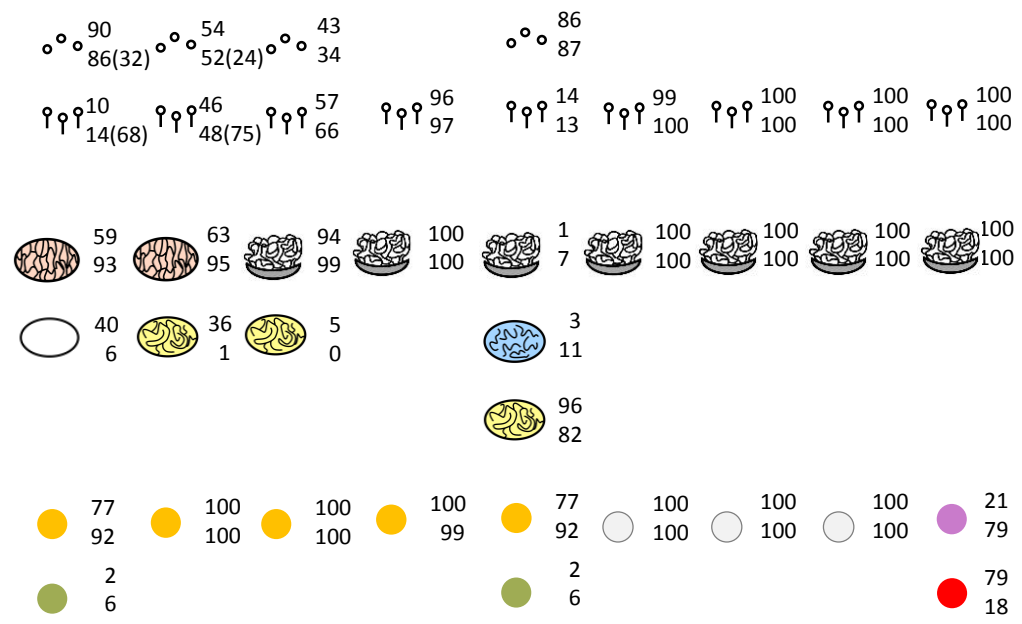


Simplified phylogeny of Trichiales



Character state probabilities



Character states

Fruiting body type

- colonial
- sessile
- stalked

Capillitium arrangement

- absent
- lax net
- separate filaments (free elaters)
- elastic net attached to the cup/stalk
- net firmly attached to the peridium from top to bottom

Colouration

- yellow
- olive green
- orange
- pink
- red
- grey
- white
- bluish

Supplementary Figure 3. Visualisation of the character state probabilities (per cent) from the stochastic mapping analyses of nodes of interest in a simplified phylogeny of Trichales.

The two numbers right to each state denote probabilities based on phylograms (above) and chronograms (below). Numbers in parentheses indicate results of an analysis based on chronograms, where Dianemataceae were treated as missing data (see explanation in the text). Probabilities below 3% are not visualized, see Supplementary Table S2 for exact values. Table 2 explains the character states.